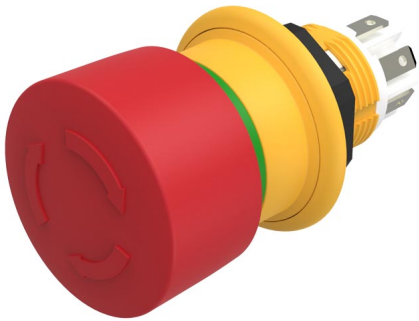


# EAO – Your Expert Partner for Human Machine Interfaces

61-6441.4057 - Emergency-stop switch compact, foolproof EN IEC 60947-5-5

## 61-6441.4057 - Emergency-stop switch compact, foolproof EN IEC 60947-5-5



*Attention: The preview is based on a sample product. This can differ from your current configuration.*

### Mounting

Mounting cut-out  
Design Ø 16 mm  
raised

### Front

Front shape  
Front dimension round  
Ø 27 mm

### Other Attributes

Marking  
Weight Arrows  
0.018 kg

### Operating-/Indication part

Lens material  
Lens colour  
Lens profile Plastic  
red  
Mushroom

### IP-Rating

Front protection IP67, IP69K

### Connection Method

Terminal Solder 2.8 x 0.5 mm

### Actuator

Switching action Maintained

### Switching element

Contacts 2 NC

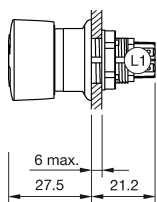
### Function

Emergency stop switch

# EAO – Your Expert Partner for Human Machine Interfaces

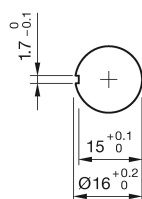
61-6441.4057 - Emergency-stop switch compact, foolproof EN IEC 60947-5-5

## Dimensions

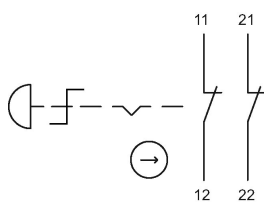


L1 = Solder/Plug-in terminal 2.8 x 0.5 mm

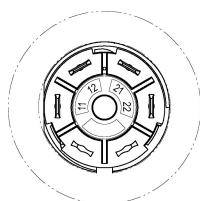
## Mounting cut-outs



## Wiring diagram



## Component layout



## Additional information

Twist to unlock clockwise

Position indication ring green

Application as per DIN EN ISO 13850 and EN 60204-1

## Legend

Switching action: C = Maintained