

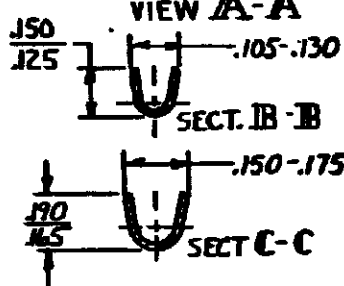
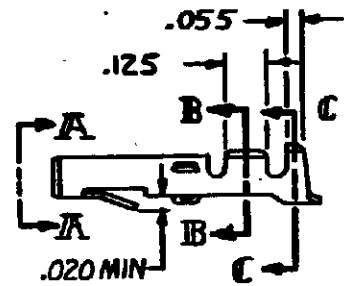
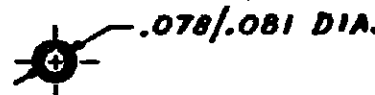
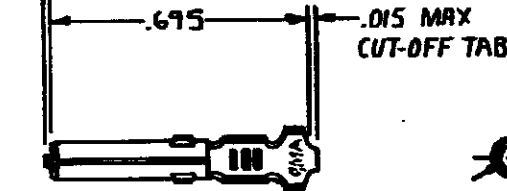
DRAWING MADE IN THIRD ANGLE PROJECTION

12 Loc CM 53

© COPYRIGHT 1964 BY AMP INCORPORATED, HARRISBURG, PA. ALL INTERNATIONAL RIGHTS RESERVED. AMP INCORPORATED PRODUCTS COVERED BY U.S. AND FOREIGN PATENTS AND /OR PATENTS PENDING.

REVISIONS			
LTR	DESCRIPTION	DATE	APPROVED
N	REMOVED FROM 6061S PER M-5605	1-2-80	MSF/SH.
P	REV. FINISH ON-5 M-6033	10-1-80	MSF/SH.
R	REV. FINISH ON-7 M-6255	1-28-81	MSF/SH.
S	REV PER ECN AG-25	10-11-83	REB X
S1	RESTORED	10/10/85	BD/RS
T	OBS. -2, -3 & -6 PER CM-862	9-3-81	RE TB

.008 MAX CUT-OFF TAB FOR -6 ONLY



NICKEL ON ENTIRE TERMINAL WITH .000030 GOLD OVER INSIDE OF MATING AREA AND WIRE BARREL.

GOLD	.012 PH. BRZ.	60619-7
GOLD	.012 BRASS	-5
TIN	.012 PH. BRZ	-4
TIN	.012 BRASS	60619-1
FINISH	MATERIAL	PART NO

UNLESS OTHERWISE SPECIFIED DIMENSIONS ARE IN INCHES. TOLERANCES ON: DECIMALS ± .015 ANGLES ±	CONTRACT NO	AMP INCORPORATED Harrisburg, Pa.
	DR M. FEHER 11-14-79	
MATERIAL	CHK D.S. Heide 1/4/80	NAME SOCKET, LOOSE PIECE, COMMERCIAL MATE-N-LOK
SEE TABLE	APPRO 10/10/85 1-7-80	SIZE A
FINISH	WIRE RANGE 20-14 AWG	CODE IDENT. NO 00779
SEE TABLE	INSULATION DIA .130 MAX	DRAWING NO 60619
		SCALE - SHEET -

AMP 1469-32 (7-73)

CUSTOMER DRAWING