

PT30 XFP CONNECTOR ✓ ACTIVE



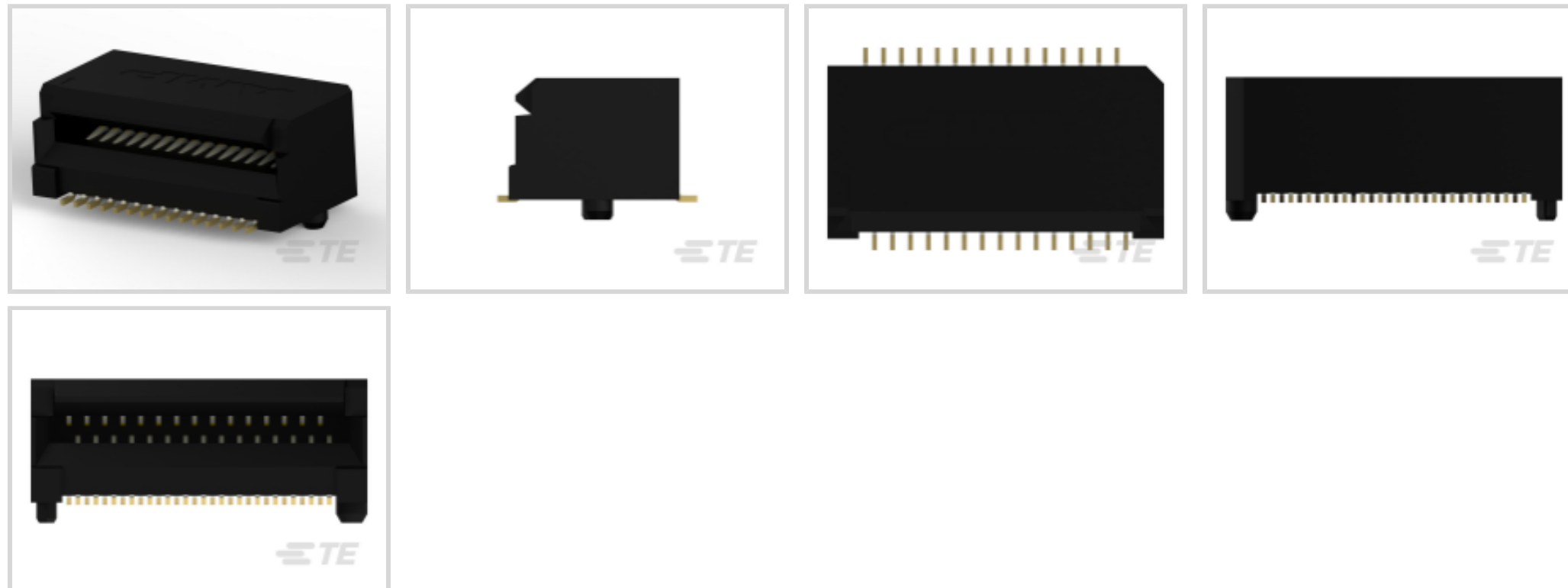
XFP

TE Part # 788862-1

TE Internal #: 788862-1

[View on TE.com >](#)

Connectors > Pluggable IO Connectors & Cages > XFP



Product Type: **Connector**

PCB Mounting Style: **Double-Sided (Belly-to-Belly)**

Data Rate (Max): **10 Gb/s**

Connector System: **Cable-to-Board**

Number of Positions: **30**

Features

Product Type Features

Connector Style	Receptacle
Form Factor	XFP
Product Line	XFP
Product Type	Connector
Connector System	Cable-to-Board
Connector & Contact Terminates To	Printed Circuit Board

Configuration Features

Number of Positions	30
---------------------	----

Electrical Characteristics

Data Rate (Max)	10 Gb/s
-----------------	---------

Contact Features

Contact Mating Area Plating Thickness	.38 μm [15 μin]
Contact Mating Area Plating Material	Gold
Contact Base Material	Phosphor Bronze
Contact Current Rating (Max)	.5 A



Termination Features

Termination Method to Printed Circuit Board	Surface Mount
---	---------------

Mechanical Attachment

PCB Mounting Style	Double-Sided (Belly-to-Belly)
Connector Mounting Type	Board Mount

Housing Features

Housing Color	Black
Housing Material	LCP (Liquid Crystal Polymer)
Centerline (Pitch)	.031 mm[.8 in]

Usage Conditions

Operating Temperature Range	-55 – 85 °C[-67 – 185 °F]
-----------------------------	---------------------------

Operation/Application

Circuit Application	Signal
---------------------	--------

Industry Standards

UL Flammability Rating	UL 94V-0
------------------------	----------

Packaging Features

Packaging Method	Reel
------------------	------

Product Compliance

[For compliance documentation, visit the product page on TE.com>](#)

EU RoHS Directive 2011/65/EU	Compliant
EU ELV Directive 2000/53/EC	Compliant
China RoHS 2 Directive MIIT Order No 32, 2016	No Restricted Materials Above Threshold
EU REACH Regulation (EC) No. 1907/2006	Current ECHA Candidate List: JAN 2019 (197) Candidate List Declared Against: JAN 2019 (197)
Halogen Content	Low Halogen - Br, Cl, F, I < 900 ppm per homogenous material. Also BFR/CFR/PVC Free
Solder Process Capability	Reflow solder capable to 260°C

Product Compliance Disclaimer

This information is provided based on reasonable inquiry of our suppliers and represents our current actual knowledge based on the information they provided. This information is subject to change. The part numbers that TE has identified as

EU RoHS compliant have a maximum concentration of 0.1% by weight in homogenous materials for lead, hexavalent chromium, mercury, PBB, PBDE, DBP, BBP, DEHP, DIBP, and 0.01% for cadmium, or qualify for an exemption to these limits as defined in the Annexes of Directive 2011/65/EU (RoHS2). Finished electrical and electronic equipment products will be CE marked as required by Directive 2011/65/EU. Components may not be CE marked. Additionally, the part numbers that TE has identified as EU ELV compliant have a maximum concentration of 0.1% by weight in homogenous materials for lead, hexavalent chromium, and mercury, and 0.01% for cadmium, or qualify for an exemption to these limits as defined in the Annexes of Directive 2000/53/EC (ELV). Regarding the REACH Regulations, TE's information on SVHC in articles for this part number is still based on the European Chemical Agency (ECHA) 'Guidance on requirements for substances in articles' (Version: 2, April 2011), applying the 0.1% weight on weight concentration threshold at the finished product level. TE is aware of the European Court of Justice ruling of September 10th, 2015 also known as O5A (Once An Article Always An Article) stating that, in case of 'complex object', the threshold for a SVHC must be applied to both the product as a whole and simultaneously to each of the articles forming part of its composition. TE has evaluated this ruling based on the new ECHA "Guidance on requirements for substances in articles" (June 2017, version 4.0) and will be updating its statements accordingly.

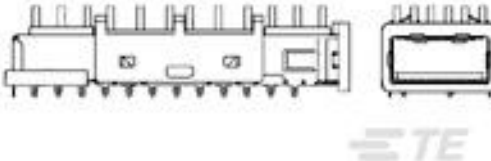
Compatible Parts




TE Part # 1888481-2
XFP KIT W/CAGE, CLIP,
HEAT SINK, SAN



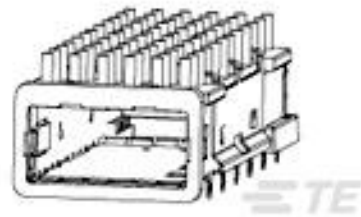
TE Part # 1658945-1
XFP CAGE ASSY w/o
ELASTOMERIC GASKET



TE Part # 1888116-2
XFP KIT W/CAGE, CLIP,
HEAT SINK, PCI



TE Part # 1888101-1
XFP CAGE ASSEMBLY w/o
Elastomeric Gasket



TE Part # 1888481-3
XFP Networking Kit(cage,
clip, heatsink)



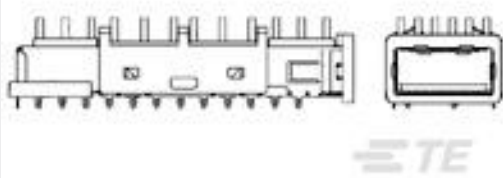
TE Part # 1489951-1
XFP CAGE ASSEMBLY



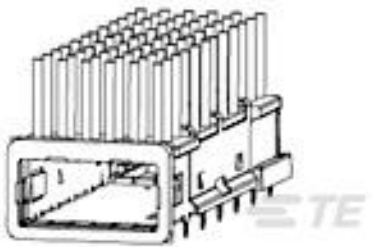
TE Part # 1888481-1
XFP KIT W/CAGE, CLIP,
HEAT SINK, PCI



TE Part # 1658871-1
XFP CAGE ASSY W/
INSULATING TA



TE Part # 1888116-1
XFP KIT W/CAGE, CLIP,
HEAT SINK, SAN

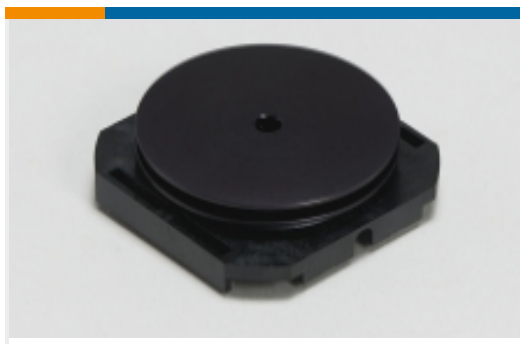


TE Part # 1888065-1
XFP Networking Kit(cage,
clip, heatsink)

Also in the Series | XFP

PT30 XFP CONNECTOR

TE Part # 788862-1
TE Internal #: 788862-1



Heat Sinks(4)



XFP(31)

Customers Also Bought



TE Part #1542618-2
XFP MSA SAN
APPLICATION



TE Part #2057630-1
CFP Receptacle Conn Assy



TE Part #2057631-1
CFP Receptacle Cover Assy



TE Part #1761987-9
ReceptacleConnAssm38PosTape
/Re



TE Part #1658871-1
XFP CAGE ASSY W/
INSULATING TA



TE Part #1489951-1
XFP CAGE ASSEMBLY



TE Part #2057592-2
CFP Guide Rail



TE Part #1888810-2
EMI/Dust Cover,XFP And
QSFP



TE Part #1367073-2
20 POS SMT CONN, SFP,
30AU



TE Part #1489948-2
XFP HEAT SINK CLIP,
PLATED

Documents

Product Drawings

[PT30 XFP CONNECTOR](#)

English

CAD Files

[Customer View Model](#)

[ENG_CVM_CVM_788862-1_E.2d_dxf.zip](#)

English

[3D PDF](#)



3D

Customer View Model

[ENG_CVM_CVM_788862-1_E.3d_igs.zip](#)

English

Customer View Model

[ENG_CVM_CVM_788862-1_E.3d_stp.zip](#)

English

Datasheets & Catalog Pages

[1773408-1 Pluggable Input/Output Solutions catalog - XFP section](#)

English

[4-1773455-2 - Quick Reference Guide Pluggable I/O Solutions](#)

English

[1-1773717-7_PLUGGABLE_IO_QRG_CN](#)

English

[1-1773717-9_HIGH_SPEED_IO_QRG_JA](#)

English

[1-1773717-8_PLUGGABLEIO_QRG_TCN](#)

English

Product Specifications

[Application Specification](#)

English

[Application Specification](#)

English

Product Environmental Compliance

[TE Material Declaration](#)

English

Instruction Sheets

[Instruction Sheet \(U.S.\)](#)

English

[Instruction Sheet \(U.S.\)](#)

English