

# Rittal – The System.

Faster – better – everywhere.

## Mounting plates for KL and KL-HD – KL 1568.700

Date : Feb 16, 2016

ENCLOSURES

POWER DISTRIBUTION

CLIMATE CONTROL

IT INFRASTRUCTURE

SOFTWARE & SERVICES

FRIEDHELM LOH GROUP



# Mounting plates for KL and KL-HD – KL 1568.700

created : 16.02.2016 build on www.rittal.com/uk-en



## Product description

**Description:** For component installation outside of the enclosure. Assembly screws included as accessories with the enclosure.

**Material:** Sheet steel, 2.0 mm

**Surface finish:** Zinc-plated

**Packs of:** 1 pc(s).

**EAN:** 4028177010253

**Customs tariff number:** 85389099

**eCl@ss 5.1:** 27189231

**eCl@ss 7.0:** 27409216

**ETIM 6.0:** EC000213


## Product features

**To fit:** Enclosure type: KL  
Enclosure type: KL-HD  
Width: = 400 mm  
Height: = 300 mm

**Weight/pack:** 1.9 kg

## Downloads

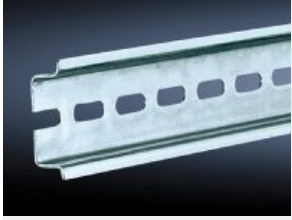
Data sheets:

 [Technical details](#)  
EN

CAD drawings:

Request

Please note that there are the following alternative products:



### Support rails TS 35/7.5 to EN 60 715 for KL, KL-HD, AE

Further information on this product

[www.rittal.com/uk-en/Support\\_rails\\_TS\\_35/7.5\\_to\\_EN\\_60\\_715\\_for\\_KL,\\_KL\\_HD,\\_AE](http://www.rittal.com/uk-en/Support_rails_TS_35/7.5_to_EN_60_715_for_KL,_KL_HD,_AE)