

Rittal – The System.

Faster – better – everywhere.

► **Punched section with mounting flange, 14 x 39 mm for tubular door frame VX, TS, SE, AX – VX 8619.710**

Date : Jun 18, 2019

ENCLOSURES

POWER DISTRIBUTION

CLIMATE CONTROL

IT INFRASTRUCTURE

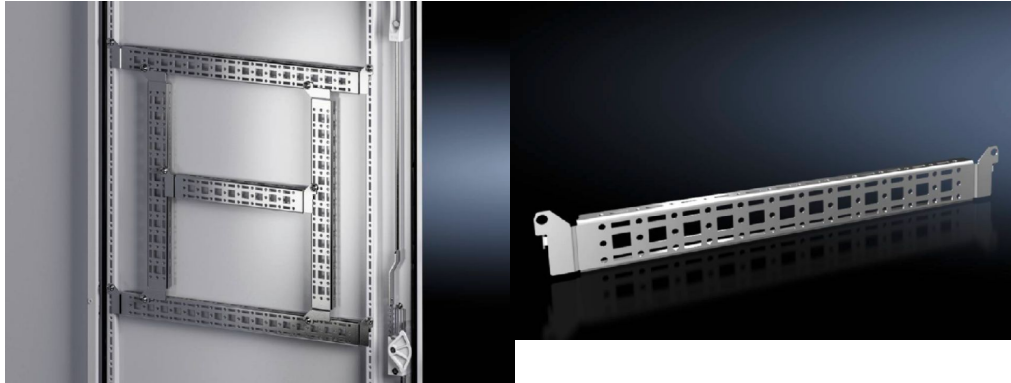
SOFTWARE & SERVICES

FRIEDHELM LOH GROUP



Punched section with mounting flange, 14 x 39 mm for tubular door frame VX, TS, SE, AX – VX 8619.710

created: 18.06.2019 on www.rittal.com/com-en



Product description

Description:	For attaching cable ducts, cable conduit holders, equipment installed on the door, etc.
Material:	Sheet steel
Surface finish:	Zinc-plated
Supply includes:	Assembly parts
Note:	For installing your own components on the punched section with mounting flange, metal screws or self-tapping M5 screws are required

Product features

To fit:	Enclosure type: VX Enclosure type: TS Enclosure type: SE Enclosure type: AX Enclosure type: AX with locking rod Width/height/depth: 500 mm
Installation options:	On the tubular door frame On identical punched sections with mounting flanges On the AX interior installation rail for configuration in the enclosure height and width
To fit door width:	500 mm
Packs of:	4 pc(s).

Weight/pack:	0.92 kg
Copper weight (kg per piece):	0
EAN:	4028177924635
Customs tariff number:	73269098
ETIM 6.0:	EC002625
ETIM 5.0:	EC002625
eCl@ss 8.0/8.1:	27189234
eCl@ss 7.0/7.1:	27189234
eCl@ss 6.0/6.1:	23159101
eCl@ss 5.1/5.1.4:	27189250
Product description:	VX Punched section, with mounting flange 14 x 39 mm, for door width: 500 mm