

## Sensor-Switched Floodlights

### LED Floodlight Projector XLED FL-100

#### Overview Sensor-Switched Floodlights

#### Information copy

**The first LED floodlight with twilight sensor system.** LED floodlight projector XLED FL-100 with integrated Night-Matic function, ideal for illuminating large hoardings, wired interconnection possible, 25W power LEDs, 820 lm, colour rendering Ra = 90.



#### Details

##### **STEINEL LED lighting system.**

Efficient, long-lasting and trendsetting. More safety and security, higher energy savings and lower service costs with intelligent sensor and LED technology from STEINEL.

##### **Light 'ON' / 'OFF' – automatically.**

Highly innovative sensors respond to light levels and automatically switch the light ON and OFF again in the morning.

##### **World premiere: the first LED floodlight with twilight sensor – the long version in a length of 1041 mm.**

Gigantic advertising boards and mega posters want to provide information and boost sales when it's dark too. And large-format company logos on the front of buildings need to provide maximum impact at night as well.

Conventional halogen floodlights can do this too but just imagine the work involved in changing bulbs at dizzying heights. The alternative and currently most energy-efficient and smartest lighting solution is called XLED FL 100, the first LED floodlight projector with integrated NightMatic function. The LED light switches ON automatically at dusk and attracts attention to the object being illuminated with 3,500 kelvins for excellent colour rendition. The colour rendering index is particularly important for illuminating advertising boards. At Ra = 90, the colour rendering index of LED floodlight projector XLED FL 100 is definitely a shining example. The LED floodlight projector is fitted with no fewer than 25 W power LEDs, delivering 820 lm of bright light. The LEDs have a life expectancy of around 50,000 h which means no maintenance work is necessary and lamps never need changing. The integrated NightMatic's response threshold can be adjusted from 2 – 100 lx. The floodlight projector comes in a length of 1041 mm and, mounted at recommended intervals of 2 m, can be interconnected by cable with a total of 16 floodlights. Incidentally, the innovative STEINEL LED floodlight projector is also available in a short version at 541 mm.



Including LED system



Intelligent LED (ATC) cooling system



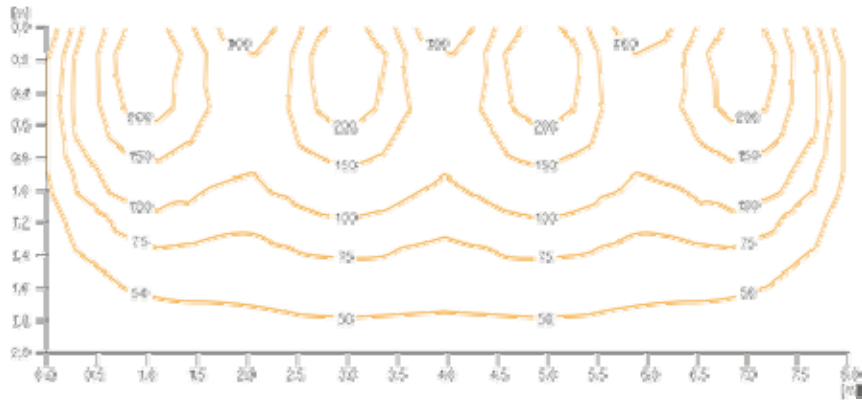
Colour rendering-index Ra ≥90



Interconnectable by cable (maximum of 16 units)



High-quality aluminium



### Technical specifications LED Floodlight Projector X LED FL-100 Black

<b>European Article Number (EAN)</b>	4007841003906
<b>Dimensions (h x w x d):</b>	182 x 175 x 1041 mm
<b>Power connection</b>	230-240 V/50 Hz
<b>Output</b>	25W power LEDs
<b>Brightness</b>	1016 lm
<b>Efficiency</b>	40.6 lm/W
<b>Light colour</b>	3500 K / SDCM 6
<b>Colour rendering</b>	Ra ≥ 90
<b>LED life expectancy</b>	50.000h (L70B10 to LM80) h
<b>LED cooling system</b>	Passive Thermo Control
<b>LED life expectancy up to</b>	50000 h
<b>Response brightness</b>	2-100 lx
<b>IP rating</b>	IP44
<b>Version</b>	Black
<b>With lamp</b>	STEINEL LED system
<b>Lamp replaceable</b>	No
<b>Weight</b>	2.2 kg