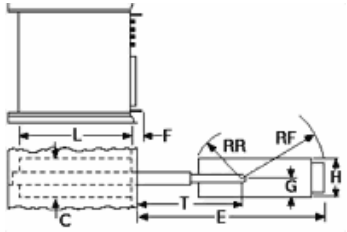


Additional Accessories

Rackmount Kit

Dimensions – Exclusive of Plug-in Units and Probes



Symbol	Definition
H	Height of front panel
L	Rack front to rearmost permanent fixture excluding cables
F	Back of front panel to foremost protrusion
E	Maximum forward clearance with instrument out and horizontal
D Min.	Minimum mounting depth from front mounting rail to rear mounting rail
D Max.	Maximum mounting depth from front mounting rail to rear mounting rail

Rackmount Kit Selection Guide

Instrument	Part Number	H (in.)	H (cm)	L (in.)	L (cm)	F (in.)	F (cm)	E (in.)	E (cm)	D Min (in.)	D Min (cm)	D Max (in.)	D Max (cm)
11201/A, 11301/A, 11302/A, 11401, 11402/A, 11403/A, 11801, 11802, CSA803A, SM11	040- 1214-03	8.75	22.3	21.6	55					14.63	37.2	27.75	70.49
271X Family	016- 0901-01	5.25	13.3	16.3	41.4	1.84	4.67						
2400 Series(w/o DV or DMMOpt.)	016- 0825-01	7	17.8	18.3	46.5	1.8	4.5	24.8	62.9	12.8	32.5	26.8	68.1
TAS200/400 TDS300/400	016- 1166-00	7	17.8	18.3	46.5	2.2	5.6	24.8	62.9	12.8	32.5	24.5	62.2
TDS200 Series	RM200	6.94	17.7	4.03	10.2	1.75	4.45						
TDS1000/2000 Series	RM2000	6.94	17.7	4.03	10.2	1.75	4.45						

TDS3000 Series	RM3000	6.95	17.7	4.16	10.6	1.78	4.51						
TDS500/600/700	016-1236-00	7	17.8	22	55.9	16.3	41.4						
CSA8000 TDS8000	016-1791-01	13.94	35.41	18.55	47.12	2.38	6.1	*1	*1	*1	*1	*1	*1
CSA7154, CSA7404, TDS6604, TDS6404, TDS7404, TDS7104, TDS7054, TDS7254	016-1790-02	10.47	26.6	18.55	47.12	2.38	6.03	*1	*1	*1	*1	*1	*1
TDS5000 Series	016-1887-00	*1	*1	*1	*1	*1	*1	*1	*1	*1	*1	*1	*1

*1 Contact your local Tektronix representative for dimensions.

49W-15857-0A, 22-OCT-2002