



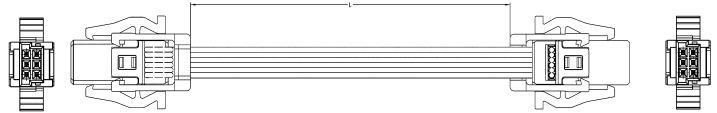
Identification	Part No.	Drawing	Dimensions in mm
----------------	----------	---------	------------------

**Cable assembly *har-flex*®
6 pole**

Cable: Flat cable,
6 wires, AWG 30,
0.635 mm pitch
Wiring: 1:1

Length: L = 0.1 m
L = 0.2 m
L = 0.5 m

33 15 243 0100 001
33 15 243 0200 002
33 15 243 0500 003

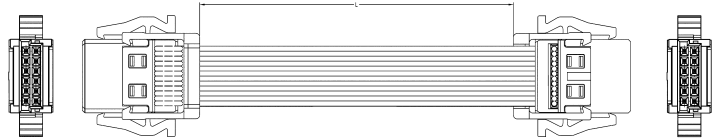


**Cable assembly *har-flex*®
12 pole**

Cable: Flat cable,
12 wires, AWG 30,
0.635 mm pitch
Wiring: 1:1

Length: L = 0.1 m
L = 0.2 m
L = 0.5 m

33 15 243 0100 004
33 15 243 0200 005
33 15 243 0500 006



**Cable assembly *har-flex*®
26 pole**

Cable: Flat cable,
26 wires, AWG 30,
0.635 mm pitch
Wiring: 1:1

Length: L = 0.1 m
L = 0.2 m
L = 0.5 m

33 15 243 0100 007
33 15 243 0200 008
33 15 243 0500 009

