

Characteristics / Ordering Code

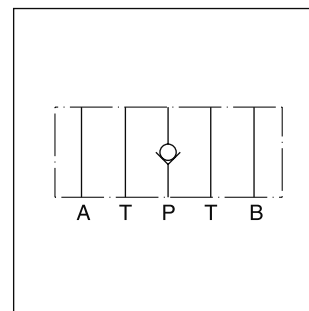
Direct operated check valves series ZRV have a cartridge type insert to provide zero leakage and high life time. The check function can be located in the P- or in the T-port.

Features

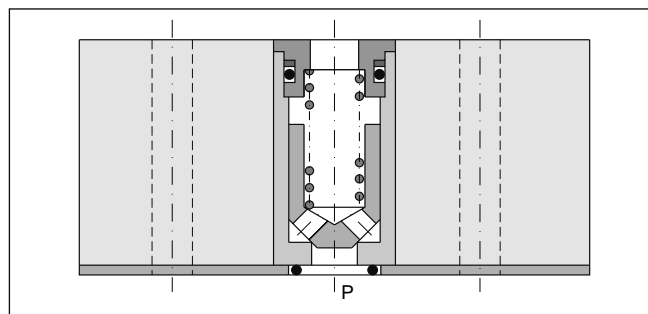
- Leakage-free seat
- High life time
- Opening pressure 0.5 bar
- ZRV01 - NG06 (CETOP 03)
- ZRV02 - NG10 (CETOP 05)



ZRV-P02

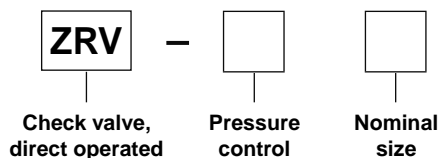


ZRV-P02



ZRV-P02

Ordering code



| Code | Pressure control |
|------|------------------|
| P | Blocked in P |
| T | Blocked in T |

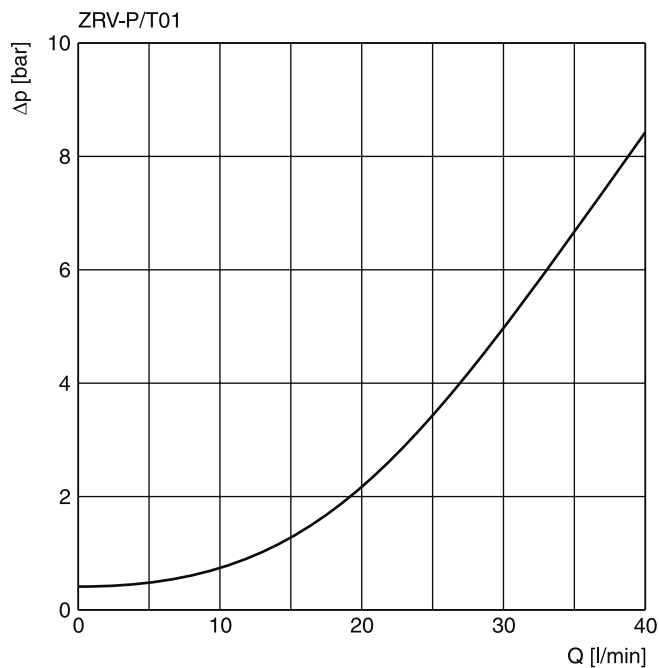
| Code | Nominal size |
|------|--------------|
| 01 | NG06 |
| 02 | NG10 |

Ordering code details see end of chapter.

Technical data

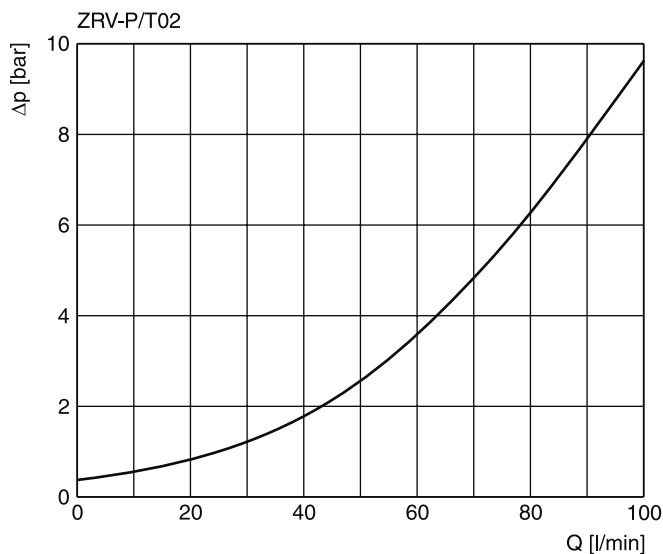
| General | | | |
|-------------------------|-------------|--------------------------------------|---------------------------------------|
| Size | | NG06 | NG10 |
| Mounting interface | | DIN 24340 A6 ISO 4401 NFPA D03 | DIN 24340 A10 ISO 4401 NFPA D05 |
| | | CETOP RP 121 | |
| Mounting position | | unrestricted | |
| Ambient temperature | [°C] | -20...+60 | |
| MTTF _D value | [years] | 150 | |
| Weight | [kg] | 0.7 | 2.0 |
| Hydraulic | | | |
| Max. operating pressure | [bar] | 350 | 315 |
| Nominal flow | [l/min] | 40 | 100 |
| Opening pressure | [bar] | 0.5 | 0.5 |
| Fluid | | Hydraulic oil according to DIN 51524 | |
| Fluid temperature | [°C] | -20...+70 (NBR: -25...+70) | |
| Viscosity | permitted | [cSt] / [mm ² /s] | 20 ... 400 |
| | recommended | [cSt] / [mm ² /s] | 30 ... 80 |
| Filtration | | ISO 4406 (1999); 18/16/13 | |

**p/Q performance curves
ZRV*01**



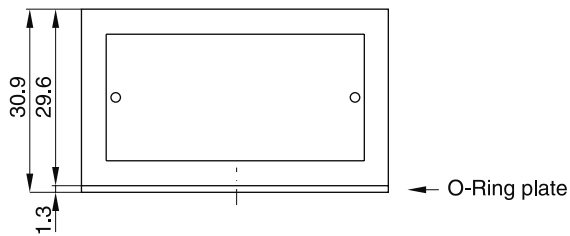
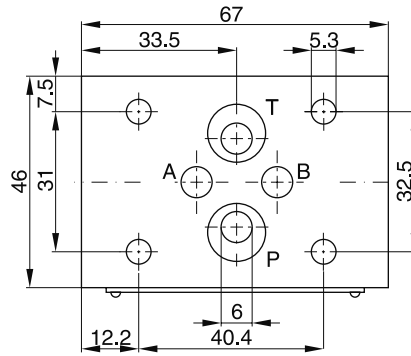
7

ZRV*02



All characteristic curves measured with HLP46 at 50 °C.

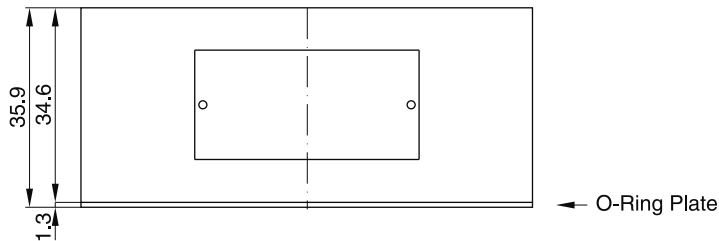
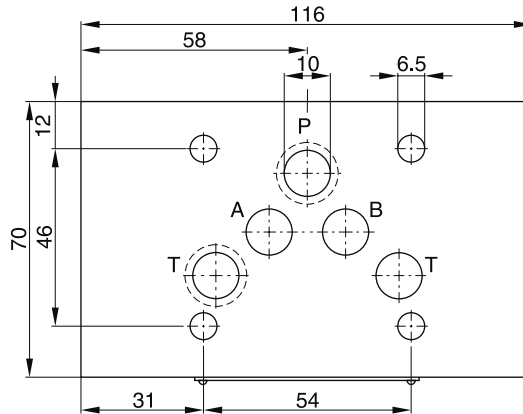
ZRV01



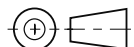
| Seal kit | |
|----------|-------------|
| Seal | Order code |
| NBR | SK-CM2-10 |
| FPM | SK-CM2-V-10 |

7

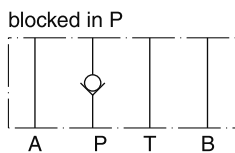
ZRV02



| Seal kit | |
|----------|-------------|
| Seal | Order code |
| NBR | SK-CM3-10 |
| FPM | SK-CM3-V-50 |

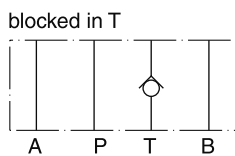


ZRV01



Series
ZRV-P01

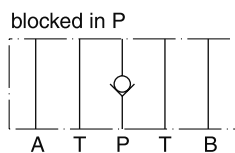
Order No.
098-90025-0



Series
ZRV-T01

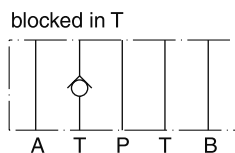
Order No.
098-90026-0

ZRV02



Series
ZRV-P02

Order No.
098-90043-0



Series
ZRV-T02

Order No.
098-90044-0

7