

Recommended Panel Cut-out Thickness = 1,40 ±0,40

TECHNICAL CHARACTERISTICS

MATERIAL
 INSULATOR: NYLON 66
 FLAMABILITY RATING: UL94-V0
 COLOR: WHITE
 PITCH: 4.20MM

ENVIRONMENTAL
 OPERATING TEMPERATURE: -40 UP TO 105°C
 COMPLIANCE: LEAD FREE AND ROHS

ELECTRICAL
 CURRENT RATING: 6 TO 9A

NB CIRCUITS □	2-3 □	4-6 □	7-10 □	12-24
AMPERES □	9 □	8 □	7 □	6

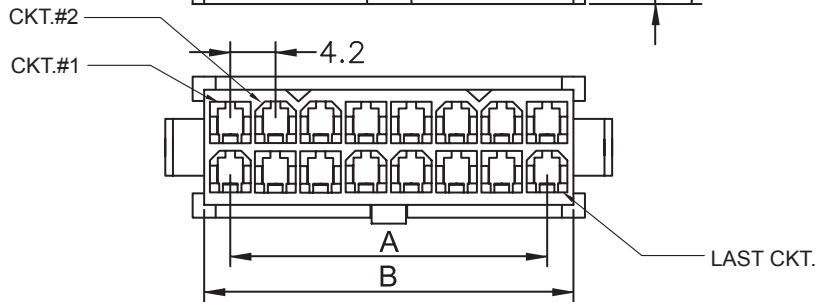
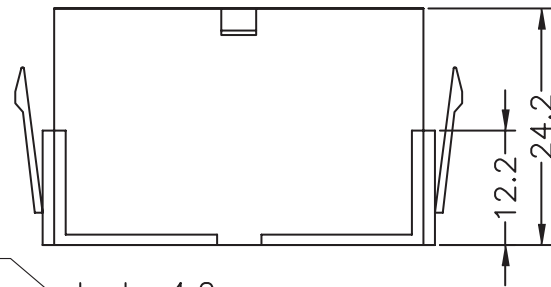
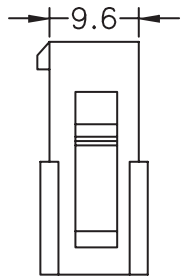
WORKING VOLTAGE: 600V AC
 INSULATOR RESISTANCE: >1000 MOHM
 DIELECTRIC WITHSTANDING VOLTAGE: 1500VAC/MN

STANDARD
 CERTIFIED: E323964 / MODEL NUMBER 649-218

SOLDERING
 WAVE PROCESS ONLY

PACKAGING
 BAG

DIMENSION
 A = 4.20 x (NB PIN / 2 - 1)
 B = 4.20 x (NB PIN / 2) + 1.30
 C = 4.20 x (NB PIN / 2) + 6.60



RoHS Compliant

G			
F			
E	26-SEP-14	DRAWING	AS
D	09-OCT-13	PANEL THICK	QL
C	25-MAR-13	PANEL THICK	AR
B	18-NOV-09	STANDARD	JP
A	24-JUN-09	BAG PACKAGING	JP
REV	DATE	FILE	BY

PROJECTION:

APPROVAL: BBu

GENERAL TOLERANCE
 .X = +/- 0.2
 .XX = +/- 0.15

UNIT: MM
 SCALE:
 SHEET: 1/3
 DRAW: AS

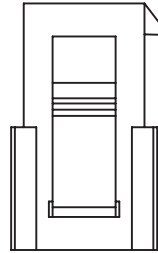
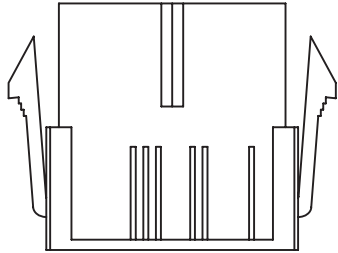
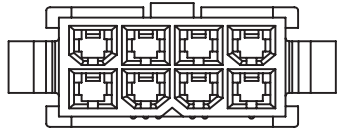


DESCRIPTION: WR-MPC4 - 4.20MM MALE DUAL ROW PLUG WITH
 PANEL MOUNT EARS

WERI PART NO: 649 0xx 218 22

SIZE
A4

A
 B
 C
 D



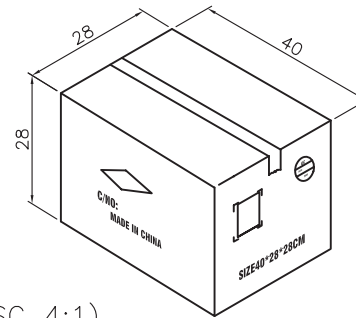
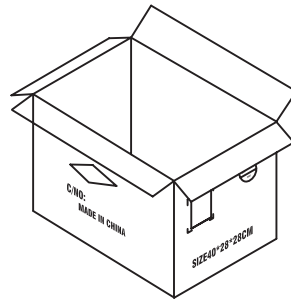
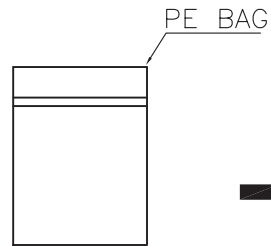
Note:

1.Dimension:

Carton Size:40*28*28(cm)

2.Quantity:

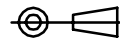
Pin.	Pcs/Bag	Pcs/Carton	Pin.	Pcs/Bag	Pcs/Carton
2	1000	7000	14	300	1500
4	1000	4000	16	250	1250
6	500	3000	18	200	1000
8	500	2500	20	200	1000
10	500	2000	22	100	800
12	400	1600	24	100	700



Carton (SC 4:1)

RoHS Compliant			
G			
F			
E			
D			
C			
B			
A			
REV	DATE	FILE	BY

PROJECTION:



APPROVAL: BBu

GENERAL TOLERANCE

.X = +/- 0.2

.XX = +/- 0.15

UNIT: MM

SCALE:

SHEET: 2/3

DRAW: AS



DESCRIPTION: WR-MPC4 - 4.20MM MALE DUAL ROW PLUG WITH PANEL MOUNT EARS

WERI PART NO: 6490 xx 21822_TPK

SIZE

A4

1

2

3

4

5

Cautions and Warnings:

This electronic component is designed and developed with the intention for use in general electronics equipments.

Before incorporating the components into any equipments in the field such as aerospace, aviation, nuclear control, submarine, transportation, (automotive control, train control, ship control), transportation signal, disaster prevention, medical, public information network etc. where higher safety and reliability are especially required or if there is possibility of direct damage or injury to human body, Würth Elektronik must be asked for a written approval.

In addition, even electronic component in general electronic equipments, when used in electrical circuits that require high safety, reliability functions or performance, the sufficient reliability evaluation-check for the safety must be performed before by the user before usage.

A

B

C

RoHS Compliant

G				PROJECTION: 	GENERAL TOLERANCE .X = +/- 0.2 .XX = +/- 0.15		
F							
E							
D							
C				APPROVAL: JC	UNIT: MM	DESCRIPTION: DISCLAIMER	SIZE A4
B					SCALE:		
A	10-SEP-14	PDF	QL		SHEET: 3/3	WERI PART NO: DISCLAIMER	
REV	DATE	FILE	BY		DRAW: QL		

D