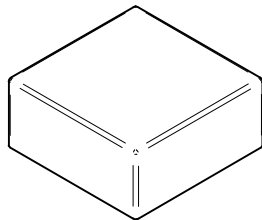
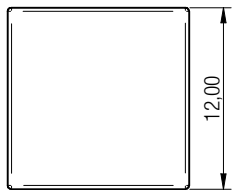
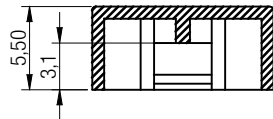


sectional drawing A-A



TECHNICAL CHARACTERISTICS

MATERIAL

>Basic: ABS UL HB

MOUNTING INSTRUCTION

>For reflow soldering only to be fitted after the soldering process

PACKAGING INFORMATION

>Bag


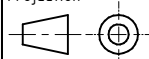
PN	Color
714301050	Black
714306050	Red
714308050	Green

Scale - 2:1

This electronic component is designed and developed with the intention for use in general electronics equipments.

Before incorporating the components into any equipments in the field such as aerospace, aviation, nuclear control, submarine, transportation, (automotive control, train control, ship control), transportation signal, disaster prevention, medical, public information network etc. where higher safety and reliability are especially required or if there is possibility of direct damage or injury to human body, Würth Elektronik must be asked for a written approval.

In addition, even electronic component in general electronic equipments, when used in electrical circuits that require high safety, reliability functions or performance, the sufficient reliability evaluation-check for the safety must be performed before by the user before usage.

		Projection 	GENERAL TOLERANCE .x = +/- 0,2 .xx = +/- 0,15	Basic material	
			Date	Name	DESCRIPTION
			Drawn	12-02-20	Jelisarow
			Checked		
					Caps for 12x12mm tact switch with square actuator
				Scale	2:1
				Position	
				Drawing- No.	71430x050
					SIZE
					A4
REV	FILE	DATE	BY	EDV NO	71430x050.dft
					System Solid Edge V20



Würth Elektronik
eiCan